

**No.1 magnetic smoldering furnace in Japan!**



**Monthly electricity costs about US\$500, no fuel required like gas and oil, no smoke and harmful gas emissions, significant reduction in industrial waste cost, and carbon dioxide reduction**

**2022 New model**

# Super Waste Processor SWP-80 II

An epoch-making organic waste magnetic smoldering furnace that is environmentally friendly and has a very low running cost, which smolders waste such as plastic, polyurethanes, tires, paint, rubber, petrochemical products, wood, paper, medical waste and food into a very small amount of ash.

SWP can be installed anywhere if there is a roof and electricity, waste can be continuously thrown in, and industrial waste can be treated efficiently with a significant cost reduction.

SWP can be used in many places such as industrial waste collection companies, tire disposal companies, petrochemical waste processing companies, hotels, exhibition halls, shopping centers, manufactures, schools, forestry, campgrounds, stadiums and in many places.



**SWP-80 II revolving door model**

No smoke is emitted while the door is open to throughput wastes. When you close the door and turn the handle, the wastes fall down. Good for various waste.



**SWP-80 II flat window model**

No smoke is emitted while the door is open to throughput wastes. When you close the door and pull the handle, the wastes fall down. Good for box waste.

Automobile tire

Plastic

PCB

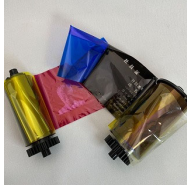
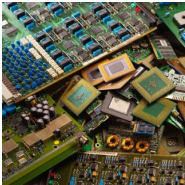
Ribbon

Paint

Medical waste

Cardboard

Wood waste



## Main features of Super Waste Processor SWP-80 II

- 1.SWP-80 II can be used anywhere if there is a roof and electricity.
- 2.Smoked only with electricity without fuel such as gas and oil.
- 3.Electricity costs about US\$500 per month.
- 4.SWP does not emit exhaust poisonous gas such as CO2 and dioxin.
- 5.High thermal efficiency.
- 6.The volume of ash is about 1/300 of the original waste.
- 7.Since amount ash is very small, it is enough to scrape the ash once every 2-3 weeks. You do not need to remove the ash every day.
- 8.Continuous additional input is possible for the reduced amount.
- 9.Since the SWP has a simple mechanism, trouble is rarely occurred and the maintenance is very easy.
- 10.Petro chemical products and rubber products such as plastic, paint, polyurethanes and tire are easily processed without gas emission.

### Treatable materials

Plastics, tires, polyurethanes, foamed styrofoam, petroleum products, paper, cardboard, timber, cloth, printed circuit boards, beans, grains chocolate, etc.

### Untreatable materials

Iron, metal, glass, stone, shells, cans, batteries, bottles, aluminum packaging bags, concrete, and etc.

There is no problem even if you put them in but they remains with the ash. Waste with water cannot be treated.

### Pre-processing

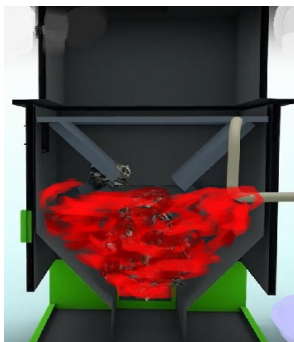
Big waste need to be cut so that it fits in the slot width 560 X height 300mm.

### Medical waste

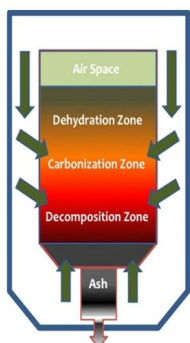
Sterilization is possible because it can be processed at a temperature of 500 to 800 degrees Celsius.

# Process of SWP and ash

After closing the top door, waste drops down to the decomposition zone.



Irradiate by magnetized air to low temperature pyrolysis and carbonization



Ash on the bottom



Ash volume is 1/300 of the original waste



## SWP is the most reliable magnetic decomposer made in Japan

### There are Big points !

It is very convenient to use SWP at anywhere if there is a roof and electricity, and it is very easy and hand-free because it does not require filling with fuel such as oil and gas.

The monthly electricity cost is around US\$500 for SWP-80 II, and there are no other costs, so it is possible to greatly reduce the paid industrial waste disposal service cost.

It is possible to throw in garbage continuously 24 hours a day, and the processing efficiency is very high. In the case of the batch method, you need to wait until the previous processing is finished.

Since the structure of the device is very simple, trouble is very few and the maintenance is very easy.

The amount of ash is 1/300 of the original waste and it is very easy to scrape ash once a month. A typical combustion furnace must remove ash after every processing.

### SWP is different !

Incinerators burn waste with flames and emit CO<sub>2</sub> and dioxin, however, SWP smolders and have no flames. It is just the same as the charcoal brazier or barbecue burns red without flames.

SWP is a smoldering method furnace with unique technology that does not emit CO<sub>2</sub> and dioxins.

### What is the difference between SWP and other magnetic decomposers?

SWP is different from a simple magnetic decomposers because SWP has a magnetic oxygen supply device to the center, a unique technology that completely burns incomplete combustion exhaust gas, and a high-technology that enhances thermal efficiency. As the result, SWP does not emit gas, smoke, smell, tar but only small amount white ash.

## Specification of Super Waste Processor

Model	SWP-80-II
Measurement	W1,500 X D1,300 X H1,800 mm
Inner volume	W650 X D650 X 800 mm
Weight	1,000Kgs
Dropping window size	W560 X 300 mm
Daily possible processing volume	0.5 to 1.5m <sup>3</sup> (Weight 0.5 tons) <i>Processing capacity varies greatly depending on composition and size of the waste.</i>
Electric consumption /200V	3 -8 kWh

### Test report of exhaust gas concentration from SWP

Applicable Items	Result	Unit	Standard	Measuring methods
Dioxin	2	Ng-TEQ-m <sup>3</sup>	Below 5	Rapid and simple analysis of dioxin
Soot	Less than 0.01	g/m <sup>3</sup> N	0.25	Meet the standard JIS Z-8808
Sulfur oxide	Less than 0.01	m <sup>3</sup> N/h	0.08	Meet the standard JIS K-0103
Nitrogen oxide	Less than 10	Cm <sup>3</sup> /m <sup>3</sup> N	250	Meet the standard JIS K-0104
Hydrogen chloride	0.9	Mg/m <sup>3</sup> N	700	Meet the standard JIS- K-0107

## Cutting Edge



1-9-6 Kaji-cho, Chiyoda-Ku, Tokyo, 101-0044, Japan

<https://cuttingedge-tech.jp/>

[sales@cuttingedge-tech.jp](mailto:sales@cuttingedge-tech.jp)



Contact to